

CE RoHS IP 67

尺寸

量程	C1	C2	C3	C4	H	H1	H2	R	T
266AA									
kg/mm									
25...50	62.0	55.0	36.0	12.0	22.0	4.0	7.0	50.0	M5
lb/inches (由上述尺寸转换)									
55.12...110.23	2.44	2.17	1.42	0.47	0.87	0.16	0.28	1.97	M5
266AH									
kg/mm									
100...2,000	62.0	55.0	36.0	12.0	22.0	4.0	7.0	50.0	M5
5,000	98.0	72.0	62.4	20.0	40.0	5.0	13.0	50.0	M6
10,000	98.0	72.0	62.4	20.0	45.0	5.0	13.0	150.0	M6
20,000	118.0	90.0	62.4	25.0	50.0	7.0	15.0	250.0	M8
30,000	138.0	115.0	62.4	25.0	73.0	8.0	15.0	250.0	M10
lb/inches (由上述尺寸转换)									
220.5...4,409.2	2.44	2.17	1.42	0.47	0.87	0.16	0.28	1.97	M5
11,023.1	3.86	2.83	2.46	0.79	1.57	0.20	0.51	5.91	M6
22,046.2	3.86	2.83	2.46	0.79	1.77	0.20	0.51	5.91	M6
44,092.5	4.65	3.54	2.46	0.98	1.97	0.28	0.59	9.84	M8
66,138.7	5.43	4.53	2.46	0.98	2.87	0.31	0.59	9.84	M10

技术参数

相关量程	kg	25; 40; 50	100; 200; 250; 500; 1t; 2t	5t	10t	20t	30t
产品毛重	kg/lb	0.3 / 0.7	0.5 / 1.1	2.4 / 5.3	2.7 / 6	4.3 / 9.5	8.3 / 18.3
灵敏度	mV/V	2 ± 1%			2 ± 1%		
零位输出	mV/V	± 0.04			< ± 0.05		
非线性	%	< ± 0.6			< ± 0.05		
重复性	%	< ± 0.3			< ± 0.1		
滞后误差	%	< ± 0.1			< ± 0.03		
蠕变	%	< ± 0.1			< ± 0.05		
阻抗	Ω	350 ± 3			700 ± 5		
额定激励电压	V(DC/AC)	10 (15V 最大)					
绝缘阻抗	G Ω	> 2 [50 VDC]					
正常工作温度范围	$^{\circ}C/^{\circ}F$	-10...40 / 14...104					
安全极限载荷	% of full scale	150					
破坏极限载荷	% of full scale	300					
密封方式		焊封, IP67					

- Exc+ 红
- Sig+ 绿
- Exc- 黑
- Sig- 白
- 屏蔽线

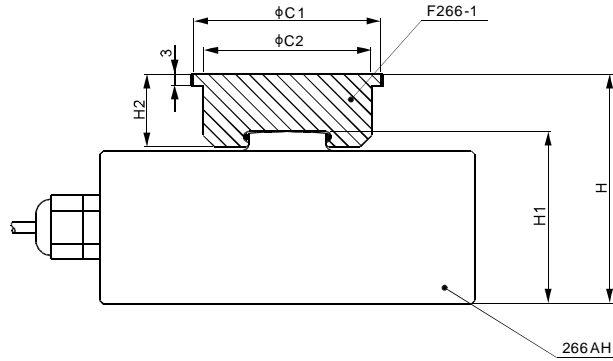
可 选

- 耐高温 120 $^{\circ}C$ [248 $^{\circ}F$]
- 防雷击和大电流
- 六线制
- 不锈钢 (量程 $\geq 100kg$) 266AS
- IP68

266AA; 266AH



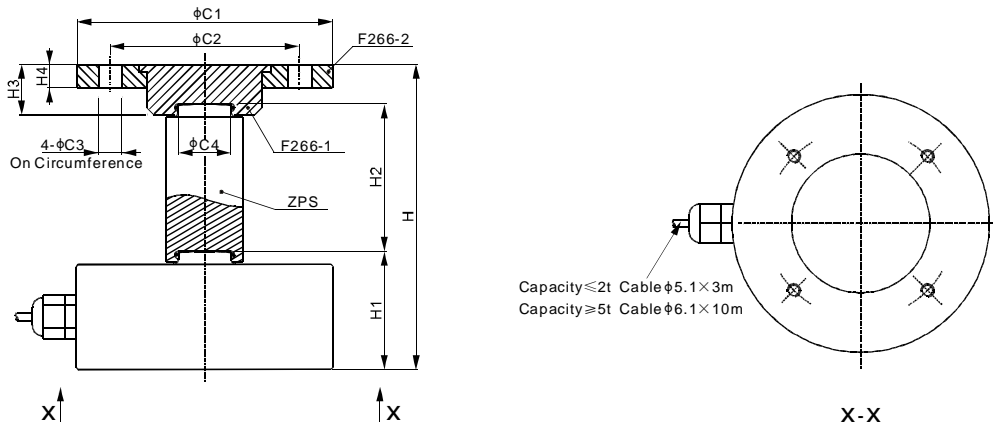
266AH 称重传感器安装附件 F266-1 承压头



尺寸

量程	C1	C2	H	H1	H2
kg/mm					
500...2,000	41.0	35.0	35.1	22.0	16.0
5,000	49.0	43.0	55.1	40.0	19.0
10,000	49.0	43.0	60.1	45.0	19.0
20,000	60.0	54.0	70.1	50.0	24.0
30,000	60.0	54.0	91.3	73.0	24.0
lb/inches (由上述尺寸转换)					
1,102.3...4,409.2	1.61	1.38	1.38	0.87	0.63
11,023.1	1.93	1.69	2.17	1.57	0.75
22,046.2	1.93	1.69	2.37	1.77	0.75
44,092.5	2.36	2.13	2.76	1.97	0.94
66,138.7	2.36	2.13	3.59	2.88	0.94

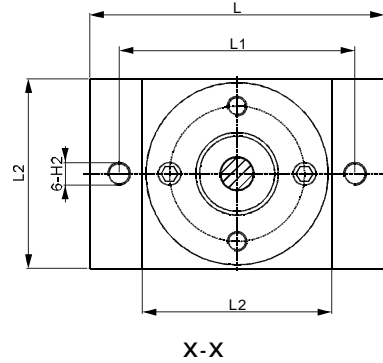
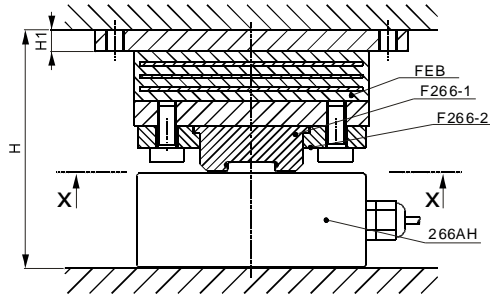
ZPS 承压摆杆和 F266 承压件



尺寸

量程	C1	C2	C3	C4	H	H1	H2	H3	H4
kg/mm									
500...2,000	81.0	60.0	9.0	12.0	81.1	22.0	46.0	16.0	7.0
5,000	97.0	72.0	9.0	20.0	111.1	40.0	56.0	19.0	9.0
10,000	97.0	72.0	13.0	20.0	116.1	45.0	56.0	19.0	9.0
20,000	115.0	90.0	13.0	20.0	134.6	52.0	64.5	24.0	10.0
30,000	115.0	90.0	13.0	20.0	155.8	73.0	64.5	24.0	10.0
lb/inches (由上述尺寸转换)									
1,102.3...4,409.2	3.19	2.36	0.35	0.47	3.19	0.87	1.81	0.63	0.28
11,023.1	3.82	2.83	0.35	0.79	4.37	1.57	2.20	0.75	0.35
22,046.2	3.82	2.83	0.51	0.79	4.57	1.77	2.20	0.75	0.35
44,092.5	4.53	3.54	0.51	0.79	5.30	2.05	2.54	0.94	0.39
66,138.7	4.53	3.54	0.51	0.79	6.13	2.87	2.54	0.94	0.39

266AH 称重传感器安装附件
FEB 避震压块和 F266 承压件



尺 寸

量程	H	H1	H2	L	L1	L2
kg/mm						
500...2,000	81.0	8.0	9.0	120.0	100.0	60.0
5,000	101.0	10.0	11.0	150.0	125.0	100.0
10,000	115.0	12.0	13.0	190.0	165.0	140.0
20,000	132.5	12.0	13.0	280.0	250.0	220.0
30,000	153.5	12.0	13.0	280.0	250.0	220.0
lb/inches (由上述尺寸转换)						
1,102.3...4,409.2	3.19	0.31	0.35	4.72	3.94	2.36
11,023.1	3.98	0.39	0.43	5.91	4.92	3.94
22,046.2	4.53	0.47	0.51	7.48	6.50	5.51
44,092.5	5.22	0.47	0.51	11.02	9.84	8.66
66,138.7	6.04	0.47	0.51	11.02	9.84	8.66