

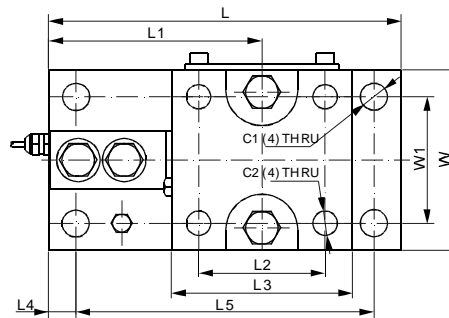
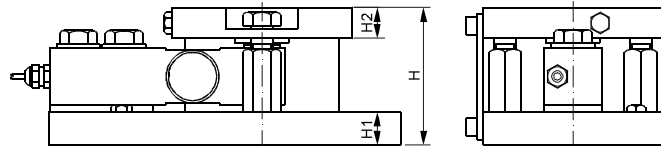
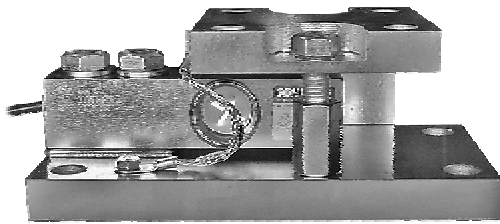
尺寸

称重传感器获得:



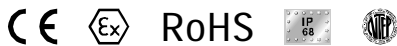
563YHM5 称重模块的橡胶垫可减小对传感器的震动与冲击, 并有防雷击和大电流的保护。

量程	C1	C2	H	H1	H2	L	L1	L2	L3	L4	L5	W	W1	T
lb/inches														
100...4,000;SE5,000	0.53 DIA	0.53 DIA	4.55	0.67	0.71	7.68	4.65	2.76	3.94	0.59	6.50	3.94	2.76	0.53
kg/mm														
100...2,000	13.5 DIA	13.5 DIA	115.5	17.0	18.0	195.0	118.0	70.0	100.0	15.0	165.1	100.0	70.0	13.5



尺寸

称重传感器获得:



量程	C1	C2	H	H1	H2	L	L1	L2	L3	L4	L5	W	W1
lb/inches													
500...4,000;SE5,000	0.59 DIA	0.53 DIA	2.99	0.71	0.67	7.68	4.65	2.76	3.94	0.59	6.50	3.94	2.76
5,000...10,000	0.71 DIA	0.59 DIA	4.33	1.06	0.98	9.57	6.00	3.35	4.72	0.75	8.07	4.72	3.35
15,000...20,000	0.87 DIA	0.79 DIA	5.73	1.42	1.26	12.52	7.76	4.09	5.98	1.00	10.52	5.98	4.09
kg/mm													
500...2,000	15.0 DIA	13.5 DIA	76.0	18.0	17.0	195.0	118.0	70.0	100.0	15.0	165.1	100.0	70.0
3,000...5,000	18.0 DIA	15.0 DIA	110.0	27.0	25.0	243.0	152.5	85.0	120.0	19.0	205.0	120.0	85.0
10,000	22.0 DIA	20.0 DIA	145.5	36.0	32.0	318.0	197.0	104.0	152.0	25.4	267.2	152.0	104.0